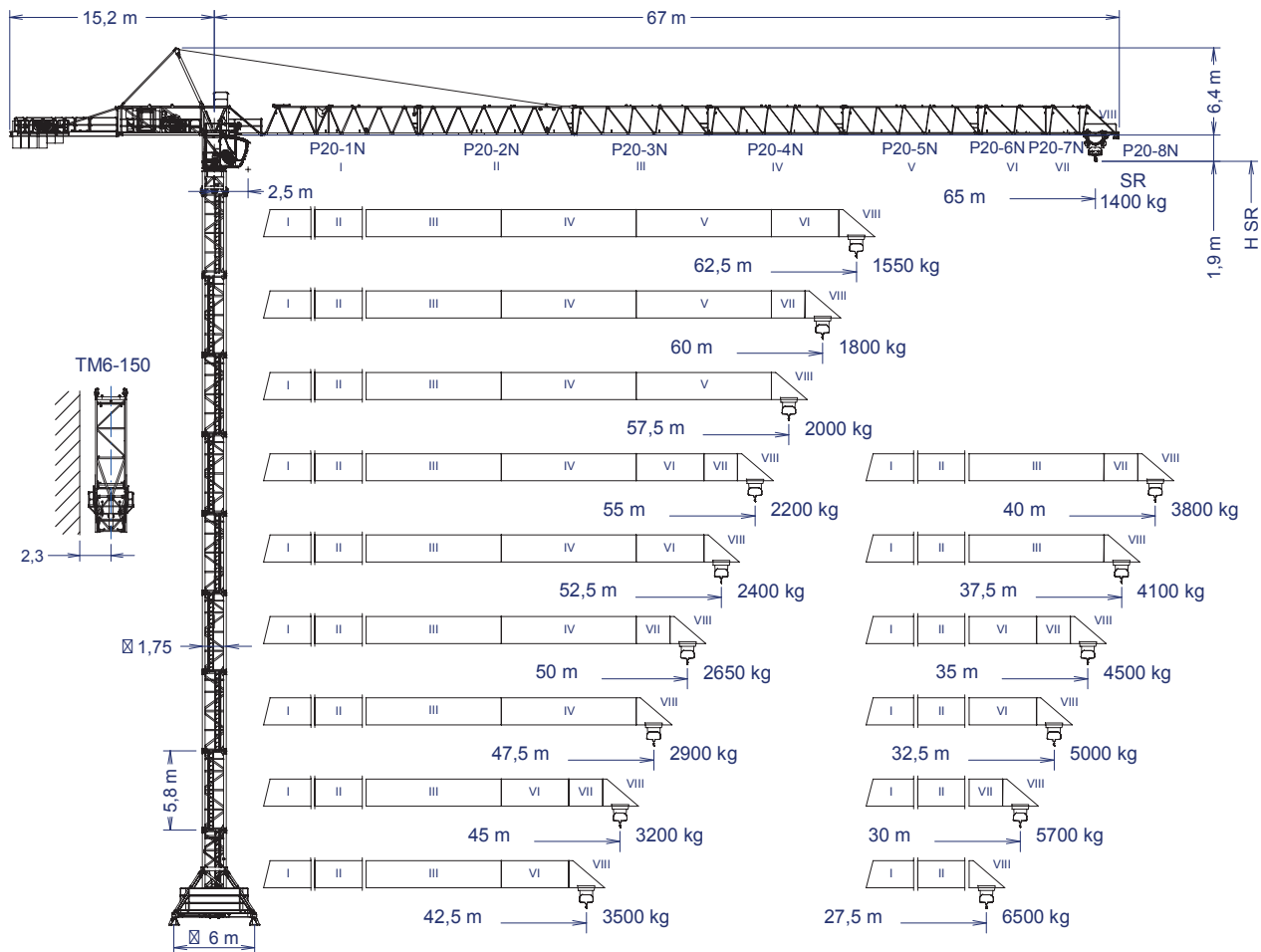


UNE 58-101-92
FEM 1001

SISTEMA DE CALIDAD CERTIFICADO SEGUN
QUALITY ASSURANCE SYSTEM CERTIFIED ACCORDING TO

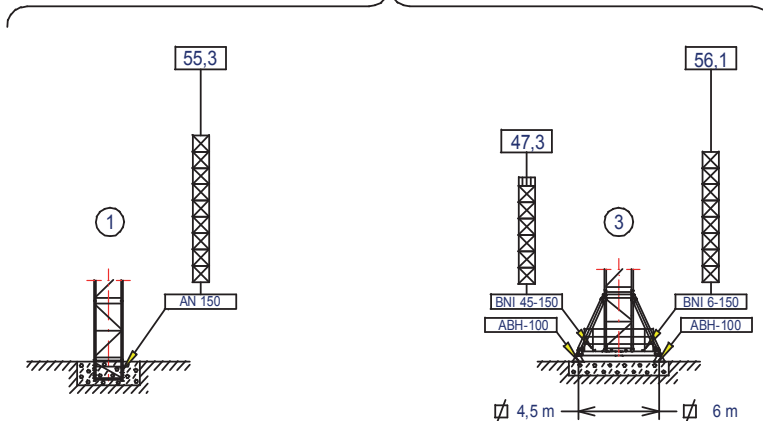
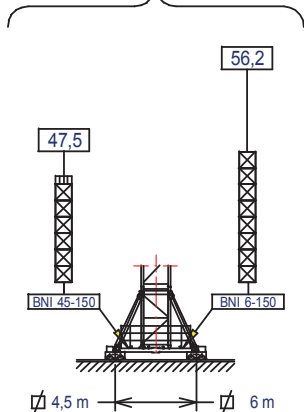
UNE-EN-ISO 9001 **CE**



☒Kabína voliteľne	H _{SR} =	Maximálna výška pod hákom bez kotvenia (m)	P20-1N-----	161.40.000	TM6-150 -----	161.35.000
			P20-2N-----	161.41.000	T12-150 -----	161.31.500
			P20-3N-----	161.42.000	TL20 -----	153.31.000
			P20-4N-----	161.43.000	TS20 -----	153.31.600
			P20-5N-----	161.44.000	TSR20 -----	153.31.800
			P20-6N-----	161.45.000	TS20A -----	200.31.500
			P20-7N-----	161.46.000	TSR20A -----	200.31.700
			P20-8N-----	161.47.000	TL20/TX-150 -----	161.36.000
			T3-150 -----	161.32.000	AN 150 -----	161.21.000
			T6-150 -----	161.31.000	BNI 45-150 -----	161.20.500
			TD6-150 -----	161.31.700	BNI 6-150 -----	161.20.000
					ABH 100 -----	201.23.000

(H_{SR}) S POJAZDOM

(H_{SR}) STACIONÁRNY



- ☐ T3-150
- ☒ T6-150
TD6-150
- ☒ T12-150



b _{3d} Výložník [m]	SR [kg]								Maximálne nosnosti										8000 kg
	Dosah háku (m)																		
	65	62,5	60	57,5	55	52,5	50	47,5	45	42,5	40	37,5	35	32,5	30	27,5	25	20	
65	1400	1483	1573	1671	1778	1895	2024	2166	2324	2501	2700	2925	3183	3480	3827	4236	4728	6080	15,6
62,5	---	1550	1643	1744	1854	1975	2108	2254	2417	2599	2804	3037	3302	3608	3966	4388	4895	6289	16,1
60	---	---	1800	1908	2025	2154	2296	2453	2627	2821	3040	3288	3571	3898	4280	4731	5272	6760	17,1
57,5	---	---	---	2000	2122	2255	2402	2564	2744	2946	3173	3429	3723	4062	4457	4924	5484	7025	17,8
55	---	---	---	---	2200	2337	2488	2655	2840	3047	3280	3544	3846	4194	4600	5080	5656	7240	18,2
52,5	---	---	---	---	---	2400	2554	2724	2913	3125	3363	3632	3940	4295	4710	5200	5788	7405	18,6
50	---	---	---	---	---	---	2650	2825	3020	3238	3483	3760	4077	4443	4870	5375	5980	7645	19,2
47,5	---	---	---	---	---	---	---	2900	3099	3321	3571	3855	4179	4552	4988	5504	6122	7823	19,6
45	---	---	---	---	---	---	---	---	3200	3428	3685	3976	4309	4692	5140	5669	6304	8000	20,1
42,5	---	---	---	---	---	---	---	---	---	3500	3761	4057	4396	4786	5242	5780	6426	8000	20,5
40	---	---	---	---	---	---	---	---	---	---	3800	4099	4440	4834	5293	5836	6488	8000	20,6
37,5	---	---	---	---	---	---	---	---	---	---	---	4100	4441	4835	5295	5838	6490	8000	20,7
35	---	---	---	---	---	---	---	---	---	---	---	---	4500	4898	5363	5913	6572	8000	20,9
32,5	---	---	---	---	---	---	---	---	---	---	---	---	---	5000	5473	6033	6704	8000	21,3
30	---	---	---	---	---	---	---	---	---	---	---	---	---	---	5700	6280	6976	8000	22,1
27,5	---	---	---	---	---	---	---	---	---	---	---	---	---	---	---	6500	7218	8000	22,7

MECHANICKÉ FUNKCIE

Mechanizmy bez FM:

Pre

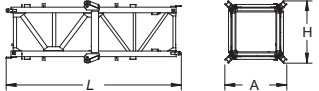
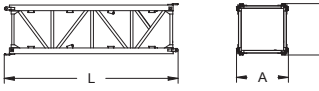
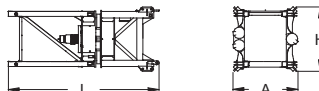
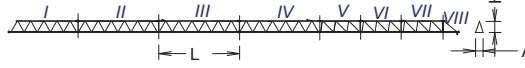
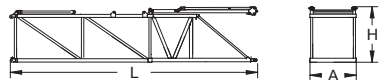
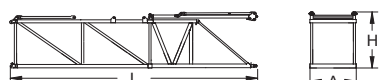
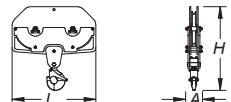

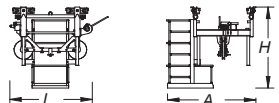
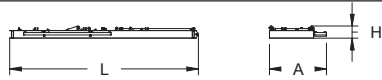
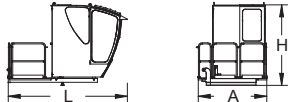
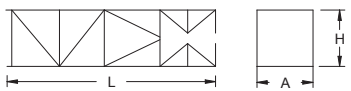
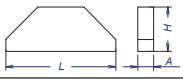



480V
60Hz

Sily a rýchlosti: o 20% viac

*voliteľne						
	EC60110VF	*EC88160VF	TG2020VF	OG2208VF	TC575VF	TH1506
b _{3d} t m/min			0...20 m/min	0...0,2 0,2...0,4 0,4...0,8 r/min sl/min	4t 0...80 8t 0...40 m/min	0,6 m/min
kW	45	65	2 x 7,3	3 x 5,5	4	11
Maximálna dráha háku	SR 352 m			400V 50Hz	Potrebný príkon ... EC60110VF = 80,1 kW EC88160VF = 100,1 kW	



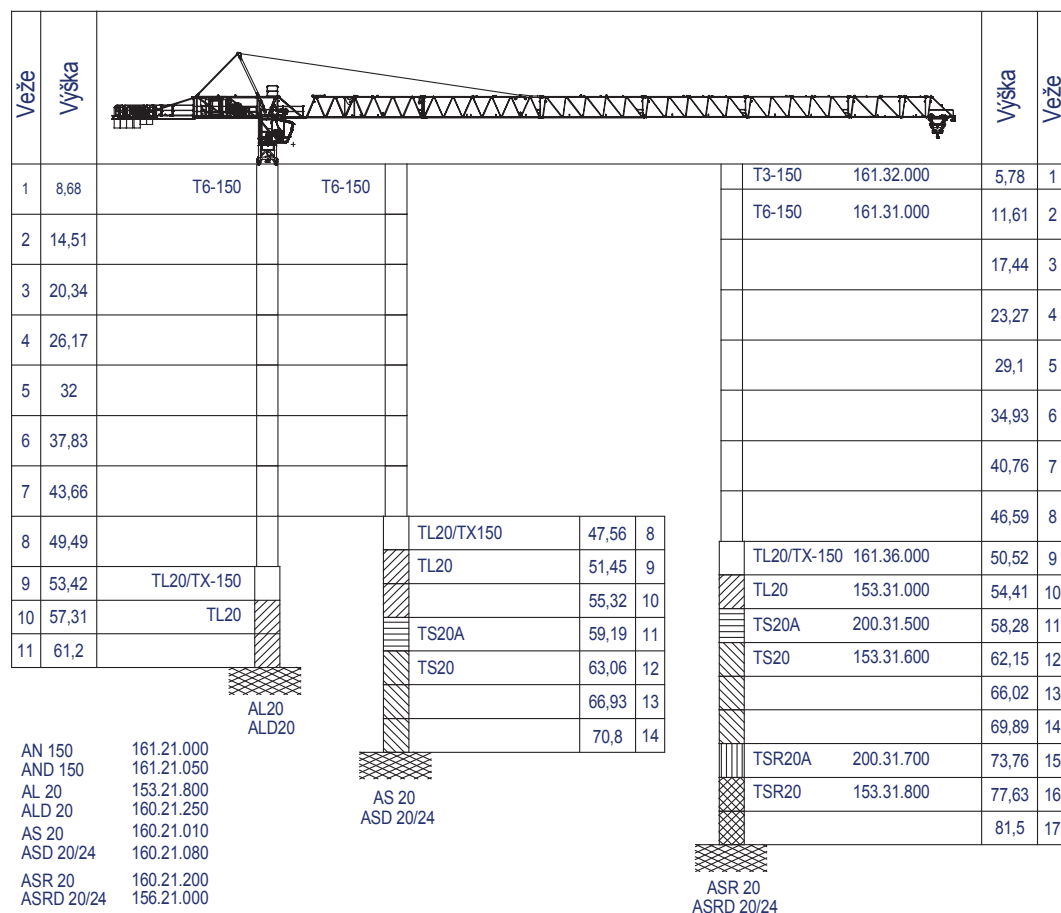
POMENOVANIE		L [m]	A [m]	H [m]	Hm [kg]	
Spodná veža	TI-6-150		6,175	2,190	2,190	3.535
Torre	T6-150		6,175	1,870	1,870	2.760
	TD6-150		6,175	1,870	1,870	2.930
	TT6-150		6,175	1,870	1,870	2.760
	T3-150		3,265	1,870	1,870	1.550
	T12-150		12,000	1,870	1,870	5.180
Otoče, základňa hlavy veže, mechanizmus otoče			4,860	2,100	2,035	6.700
Sekcie výložníka	P20-1 [I]		11,660	1,175	2,230	1.913
	P20-2 [II]		11,690	1,150	2,295	1.630
	P20-3 [III]		10,190	1,200	2,195	1.290
	P20-4 [IV]		10,190	1,165	2,145	970
	P20-5 [V]		10,115	1,165	2,145	775
	P20-6 [VI]		5,190	1,200	2,135	345
	P20-7 [VII]		2,690	1,200	2,135	140
	P20-8 [VIII]		2,950	1,266	2,440	275
	Vrchný diel (so zdvihom, pohonom mačky a elektrickými rozvodňami)				10,890	2,150
Vrchný diel (bez zdvihu, pohonom mačka a elektrickými rozvodňami)			10,890	2,150	2,480	5.450
Zostava háku	SR		0,996	0,200	1,00	350
Úvaz výložníka			5,845	0,325	0,350	838
Mačka	SR		1,80	1,93	1,77	405
Protivýložník s plošinami			8,160	2,475	0,530	1.960
Plošina a kabína			3,520	2,060	2,400	1.085
Šplhacia klietka	TM6-150		10,320	2,420	2,310	3.285
Záťaž			3,8	0,58	1,5	6.000
Protizáťaž	Velká		2,13	0,60	1,49	4.100
	Malá		1,38	0,60	1,49	2.560

ZÁŤAŽE

Pre stredné výšky použite záťaž korešpondujúcu s väčšou výškou!

BNI 45-150 H _{SR} = Výška pod hákom (m)	20,3	31,9	41,6	47,5	
BNI 6-150 H _{SR} = Výška pod hákom (m)	44,5	---	50,3	56,2	
Počet záťaží	Záťaž 6000 kg	8	10	12	16





56,2 m pod hákom,
 s pojazdoma
 základňou 6x6 m
 a bez záťaží

V kamiónoch



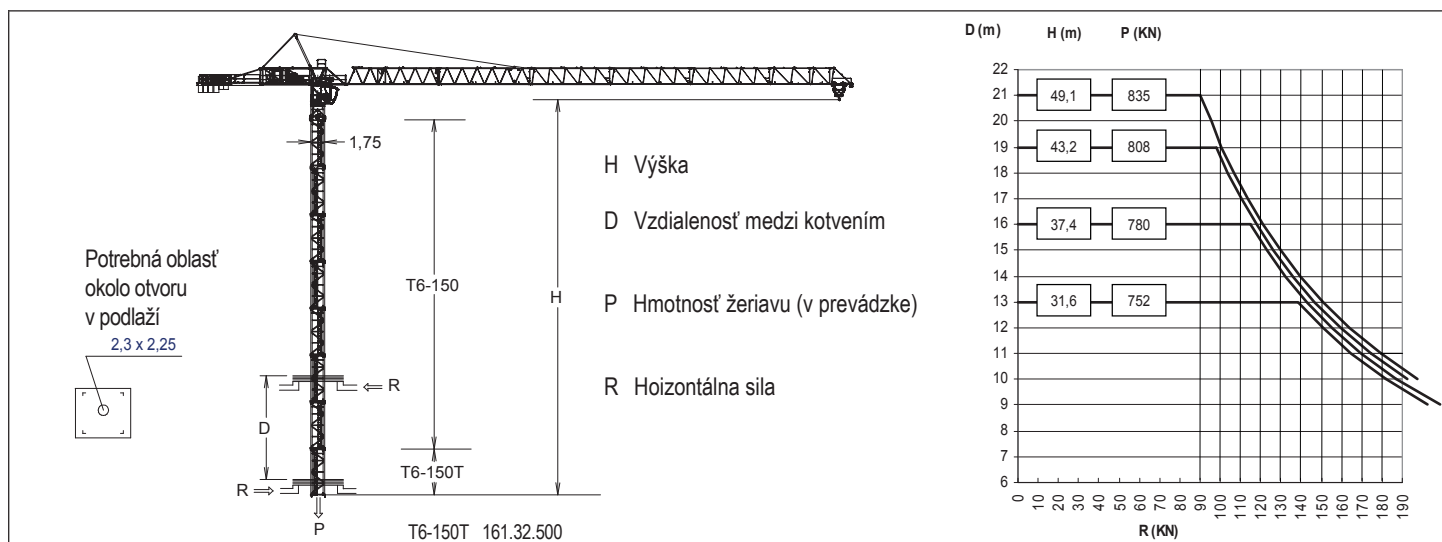
TD6-150 7 kamiónov

V kontajneroch

HIGH CUBE 40'

TD6-150 7 kontajneroch

T6-150 9 kontajneroch



JASO EQUIPOS DE OBRAS Y CONSTRUCCIONES, S.L.

Ctra./Rd. Madrid - Irún Km. 415
 20.213 IDIAZABAL [Gipuzkoa]
 ESPAÑA / SPAIN
 P.O. Box, 23 - 20.200 BEASAIN

Tel. +34 943 - 18 70 00
 Fax. +34 943 - 18 70 20
 E-mail: jaso@jaso.com
 http://www.jaso.com

Fecha / Date: 16-03-2009

Informácie môžu byť zmenené bez predchádzajúceho varovania.
 Tieto informácie sú podávané bez záruky.

PREDAJCA:

CPH - IN Yaso, s.r.o.
 038 41 Košťany nad Turcom 302
 SLOVAKIA
 + 421 911 464 909, + 421 908 962 153
 cphin@cph-in.sk, www.vezovezeriavy.sk